

Bethesda (Bedok-Tampines) Church (BBTC)

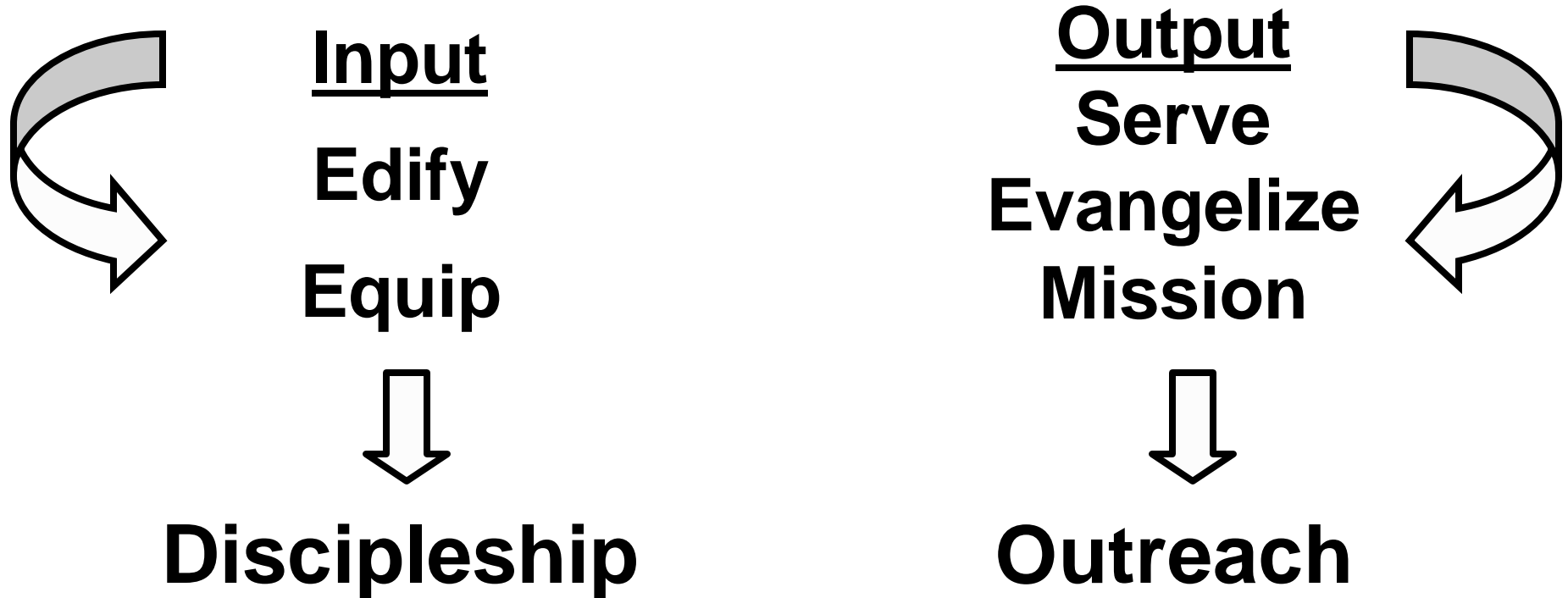
- (A) Our Big Picture Vision & Purpose**
- (B) Our Core-Values**
- (C) Our Process - Template**
- (D) The Focus of Our Focus**
- (E) Leadership Structure**

Our Vision Statement

To build a DYNAMIC COMMUNITY church
whose HEAD is the Lord Jesus Christ,
whose HELP is the Holy Spirit
whose FOCUS is the Great Commission
to the glory of GOD the FATHER.

Our Focus is the Great Commission

(A) The Big Picture Vision & Purpose



(B) Our Core-Values

1. Pillar of WORSHIP

- in Spirit and in Truth

(John 4:23 & 24; Matthew 22:37)

As priests ministering to the Lord

Participants, not spectators

Focus on the Lord

In Unison – one accord

(B) Our Core-Values

2. Pillar of the WORD

- Anointed preaching, teaching and sharing of the Word to edify the Church (*Hebrews 4:12; Acts 20:32*)**

(B) Our Core-Values

3. Pillar of PRAYER

- **Our lives and ministries must be under girded by prayer (*Ephesians 6:18*)**
- **BBTC - a House of Prayer for ourselves, the Church, Singapore, Israel & the nations (*Isaiah 56:7*)**

(B) Our Core-Values

- 4. Our Focus : The GREAT COMMISSION
The Focus of Our Focus -
MAKE DISCIPLES
*(Matthew 28:18 – 20)***

Building depth in the priority of our Walk

- (A) Who are we becoming?**
- (B) Are we fulfilling God's call and purpose for our lives?**

(B) Our Core-Values

5. Importance of the CG Church-In-Action Gp

Body-Life : Romans 12; 1 Corinthians 12

- Where each member is encouraged to be a part of**
- Where each member grows spiritually**
- Where each member serves in the body life**
- Where the priesthood of the believer is expressed locally (*1 Peter 2:9*)**

(B) Our Core-Values

6. ACCOUNTABILITY & COVERING

- (*Hebrews 13:17*)

7. PRAYING & COMMUNICATING

- (*Ephesians 6:18*)

8. NO OFFENSES

- (*1 Corinthians 13:4 – 8a*)

(B) Our Core-Values

- 9. No CONDEMNATION,
No COMPARISON nor
COMPETITION but
ENCOURAGEMENT always**
- (*Philippians 2:1 – 4*)**

(B) Our Core-Values

10. MAXIMUM PARTICIPATION of all members in the Church.

- Each to know his/her :-

(a) CALLING (*Ephesians 4:1*)

(b) GIFTINGS (*1 Peter 4:10*)

(c) PORTION (*1 Corinthians 12:18*)

(B) Our Core-Values

**11. Focus on UNITY in the Spirit,
not Uniformity**

**Focus on Biblical PRINCIPLES over
methodologies**

**No one size fits all in the context of
our goals**

(Ephesians 4:3; 1 Corinthians 12:4 – 6)

(B) Our Core-Values

12. Output - EVANGELISM

- To continuously encourage our members to FIRST reach out to our Oikos at the individual level as well as through cell-based and corporate events.**

(B) Our Core-Values

13. Output - MISSIONS

- The Gospel to the nations.**
- To be involved directly through our members in the nations.**
- Indirectly through partnerships with mission agencies and para-church organizations.**

(B) Our Core-Values

**14. BBTC a community of the WORD
and the SPIRIT.**

- (*Colossians 3:16; Ephesians 5:18*)

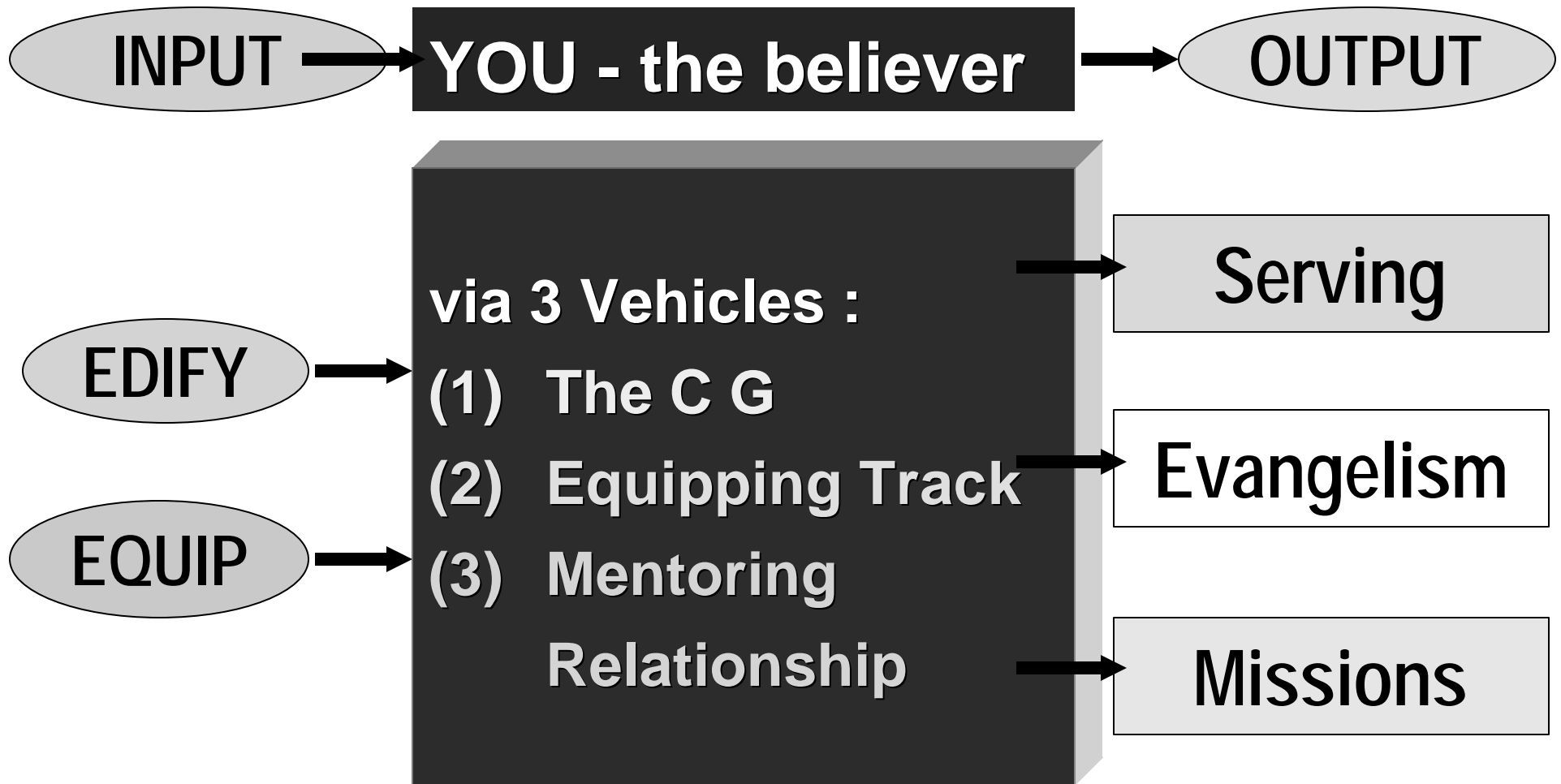
(B) Our Core-Values

15. We recognize the KINGDOM of GOD is larger than the local Church

- *John 10:16*

- Hence, the importance of a Kingdom mindset**
- Focus and integration of ministries in BBTC; networking and partnerships with others in the kingdom where appropriate.**

(C) Our Process - Template



(C) Our Process - Template

The process to fulfill our vision and purpose.

Every BBTician to belong to a CG

***(Church-in-Action Group)* where he / she will :-**

(1) Be EDIFIED and EQUIPPED

(a) Growing in Spiritual Maturity

(b) Growing in Ministry Skills

(C) Our Process - Template

The process to fulfill our vision and purpose.

Every BBTician to belong to a CG

***(Church-in-Action Group)* where he / she will**

(2) (a) SERVE

(b) EVANGELIZE

(c) Be involved in MISSION

**(D) The FOCUS of Our Focus
- Make Disciples**

It is all about

LIVES impacting LIVES

Deliberately - Intentionally

ONE LIFE AT A TIME

(D) The FOCUS of Our Focus - Make Disciples

BBTC – a culture where :-

We invest our TIME, ENERGY & RESOURCES

- ❖ To sow, plant and water**
- ❖ To influence and impact**
- ❖ Lives with the aim of
Making Disciples of Christ
- Followers of Christ -**

Profile of Disciples of Christ

**True
Worshippers**

**Maturing into
Christlikeness**

**Walking
in Obedience**

**Walking by
Faith**

**Overcoming
Sins**

**Growing
Spiritually**

**Overcoming Sin
- the self life**

**Overcoming
the world**

**Overcoming
the evil one**

Profile of Disciples of Christ

**Filled with
the Spirit**

**Rooted to
the Word**

**Committed to
Body Life**

Alerted to reach out to oikos

**Secured and
Established
in relationship
with God**

**Committed to
local Church -
BBTC**

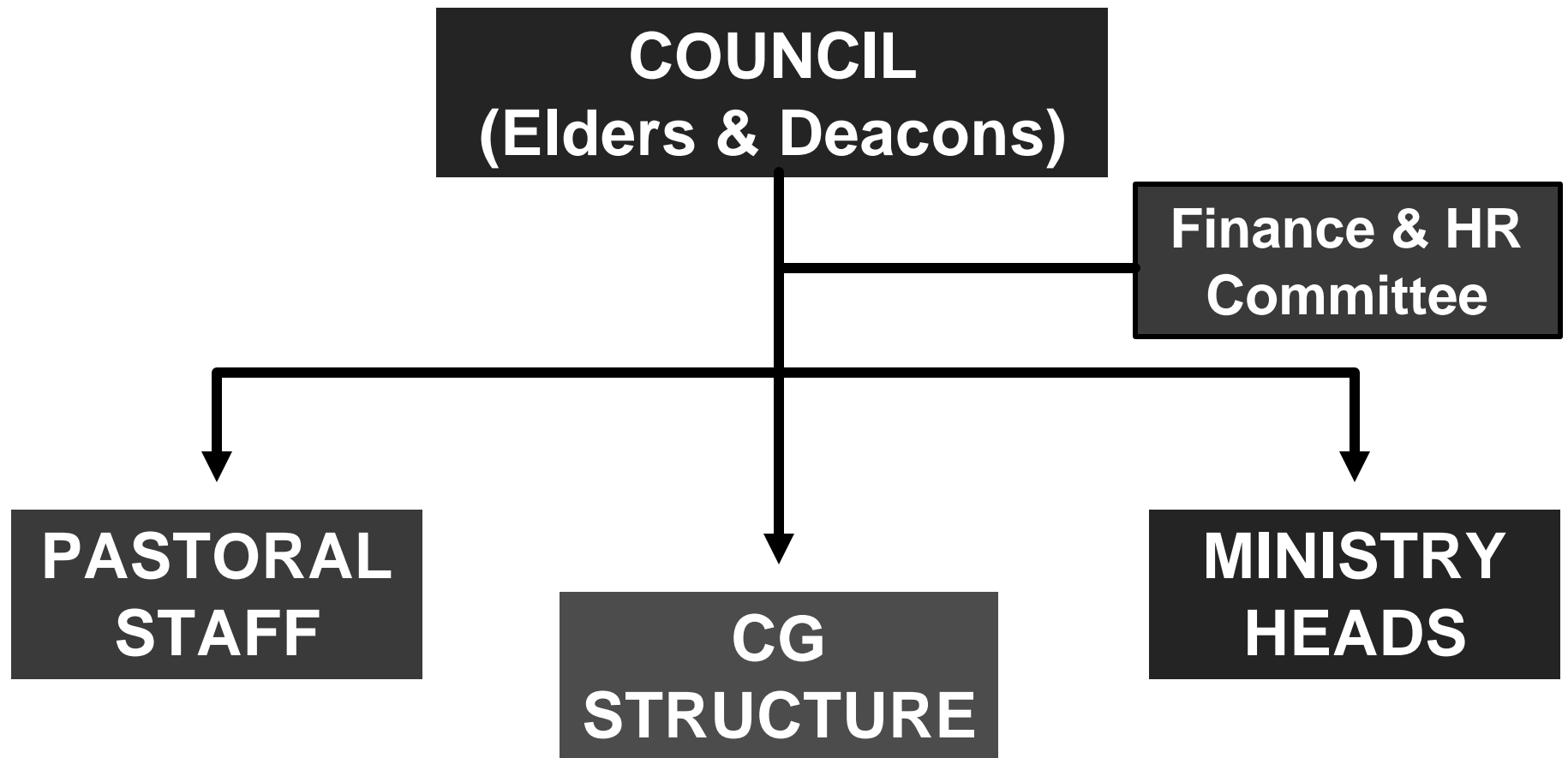
**Strong
Believers**

**Strong
Families**

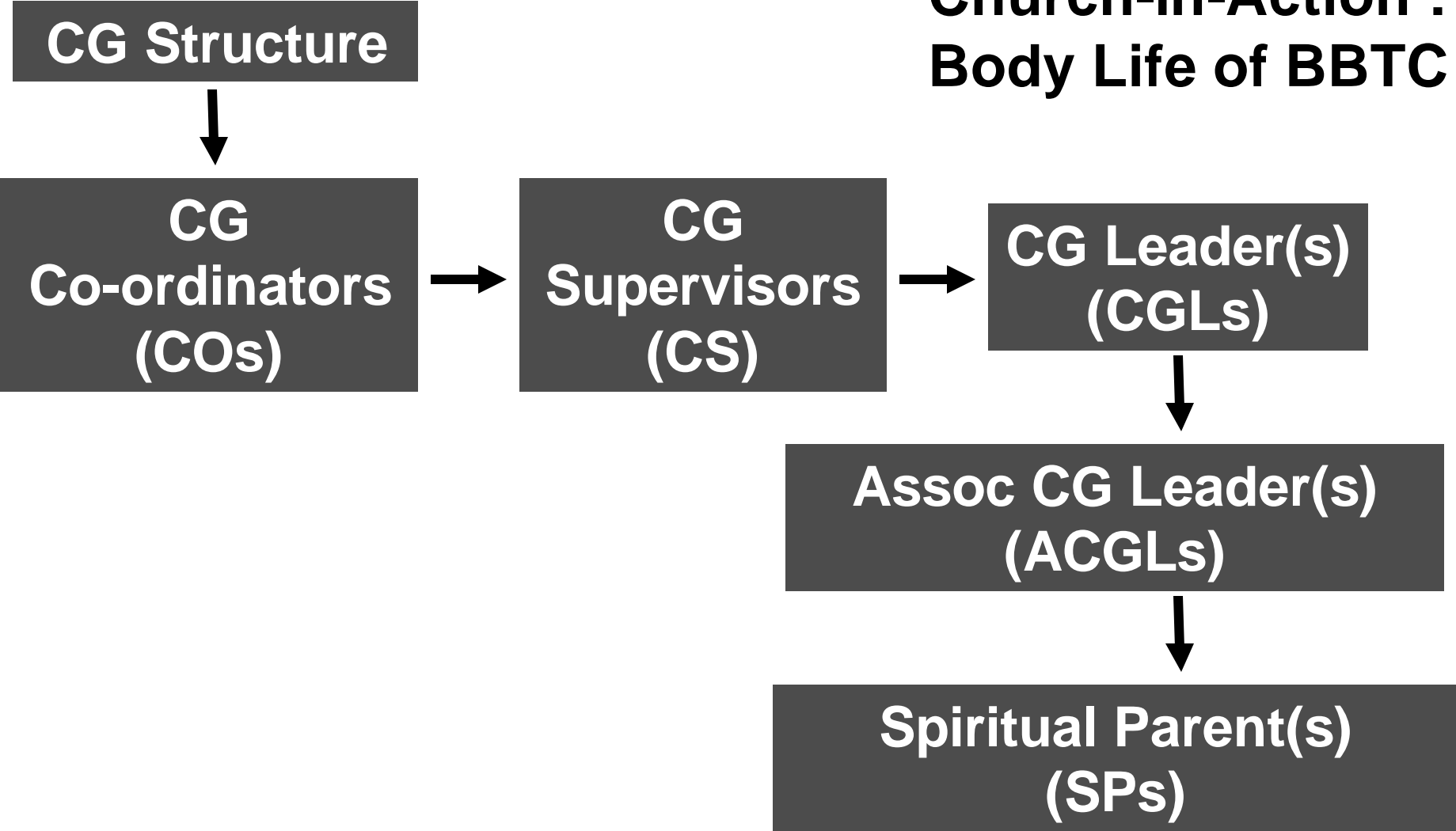
**Love for
brothers and
sisters**

BBTC Leadership - Structure

Church-in-Action : Body Life of BBTC



Church-in-Action : Body Life of BBTC



(E) Leadership - Structure

Church-in-Action : Body Life of BBTC

CG Structure covers

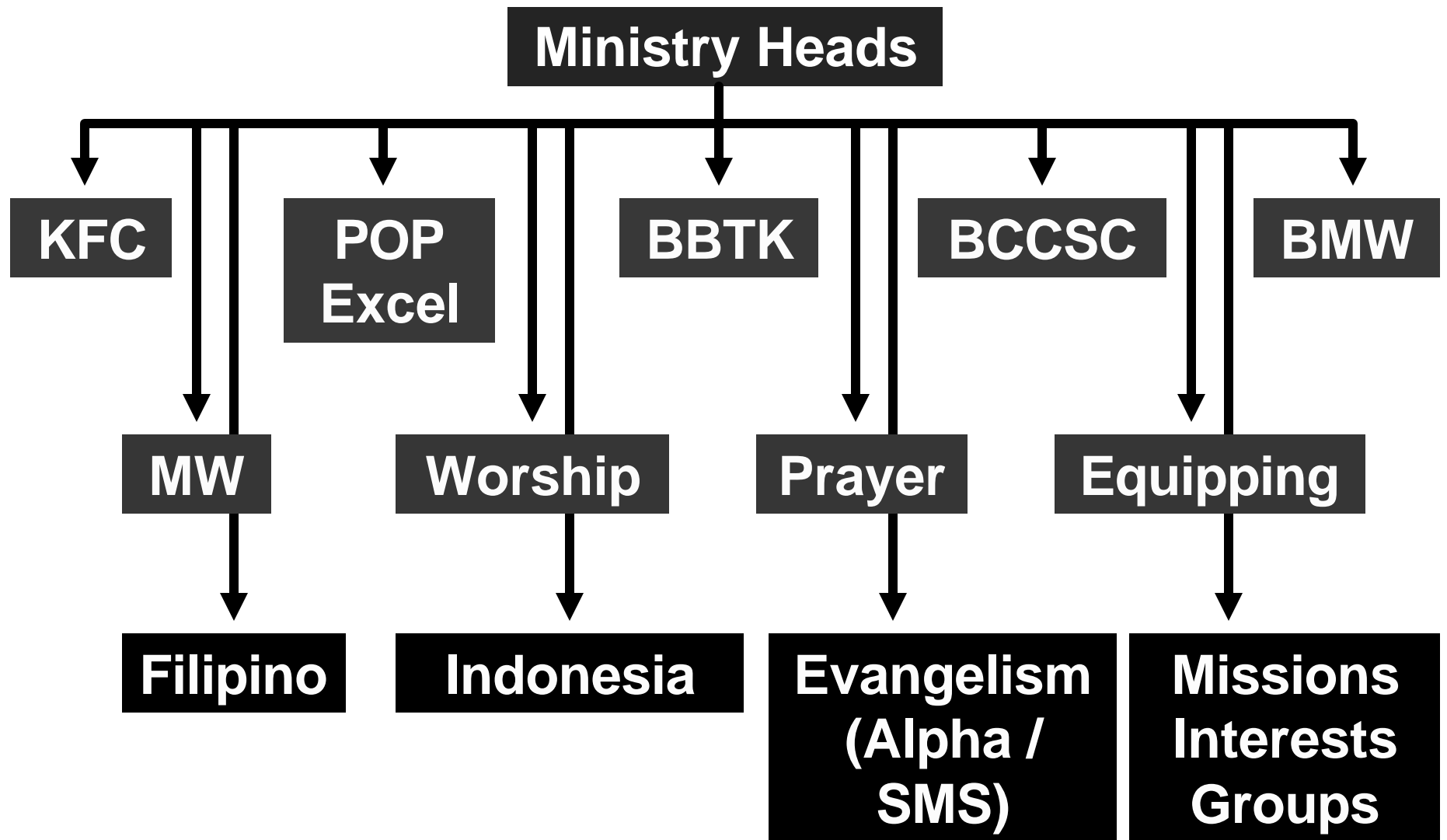
Youth Ministry

Young Adult Ministry

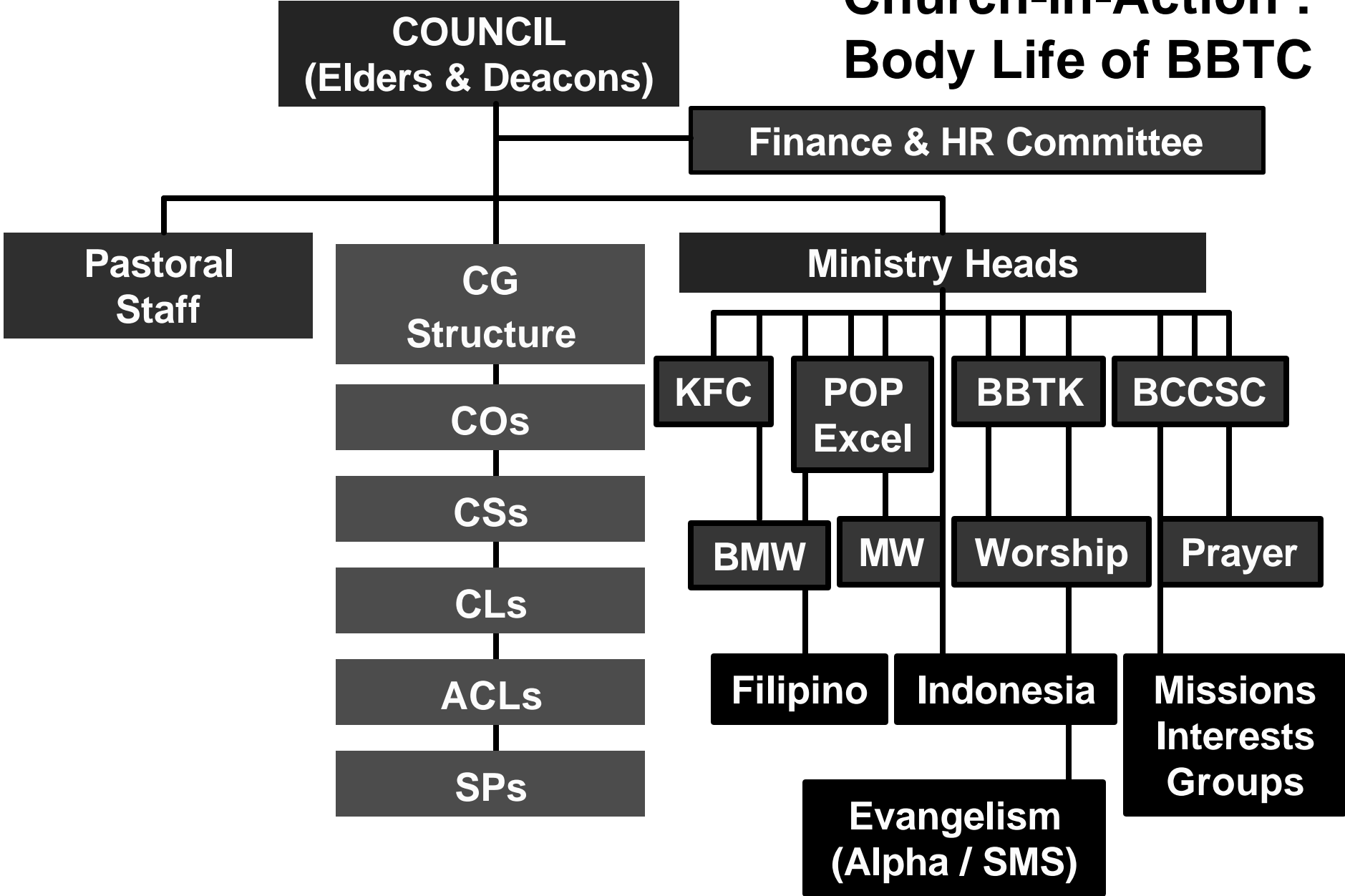
Adults - Family

Senior Citizens

Church-in-Action : Body Life of BBTC



Church-in-Action : Body Life of BBTC



CONCLUSION

**Do you know and understand
our vision and purpose?**

Are you a part of the Action in BBTC?

**Will you commit to
your local church here at BBTC?**



CONCLUSION

**Let us soil
our hands and
wet our feet**

**Let us
arise and build
the Church**